

Blue Hill Falls Bridge

Environmental Considerations



Natural Resources

- What are they?
- What activities could impact them?
- How can impacts be avoided and minimized?
- What laws protect them?



Coastal Wetlands

Highest Annual Tide



Rock, cobble, gravel

Coastal Wetlands

Intertidal Vegetation



Migratory Corridor



Fish Species

Alewives



Eels/Elvers



Smelt



Endangered Fish Species

Shortnose Sturgeon



Atlantic salmon



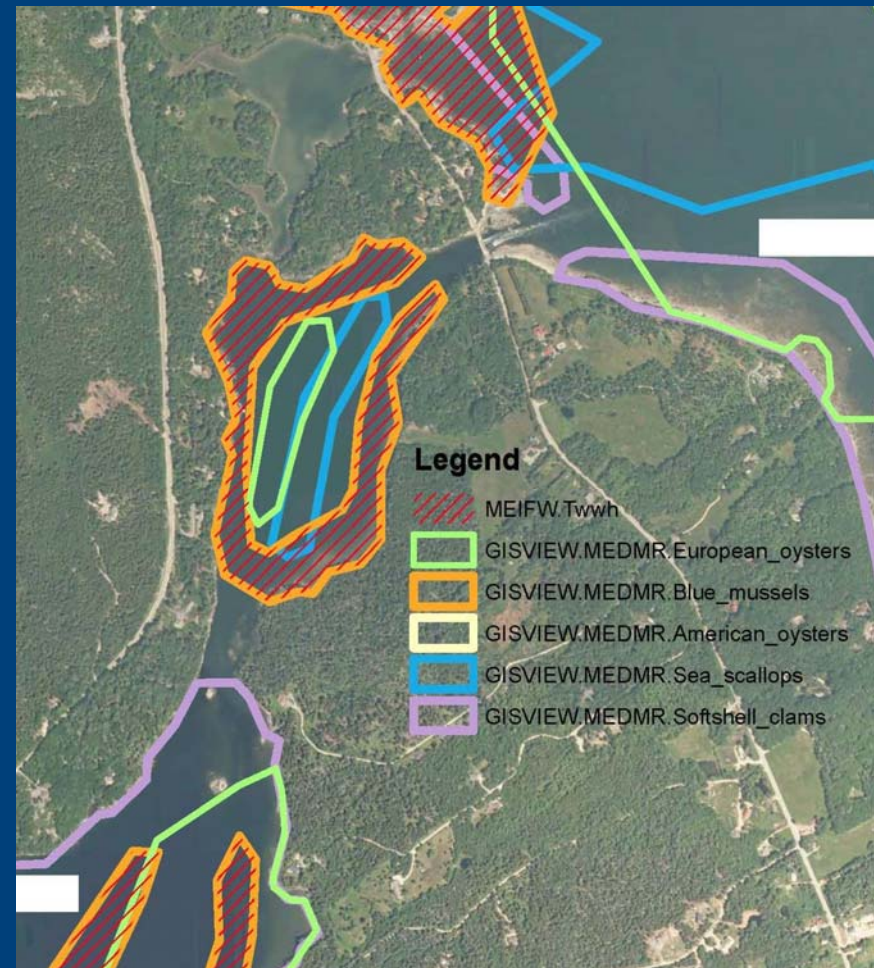
Atlantic sturgeon



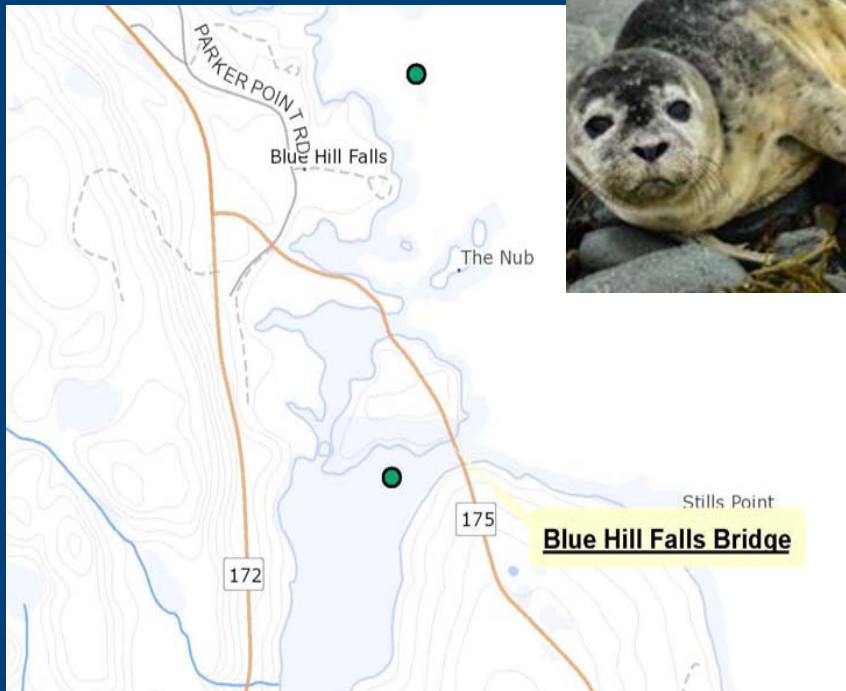
Photo credit: University of Maine.

Shellfish & Waterfowl

- Scallops, soft shell clams, oysters
- Local information provided
 - wintering eider ducks
 - ducks, loons



Marine Mammals



- Mapped Haulouts
- Marine & Environmental Research Institute
- MaineDOT Observations

Northern Long-Eared Bat

- Federally Endangered
- Detected at bridge by acoustic survey



Potential Impacts...

- Habitat Conversion
- Temporary Impacts:
 - Noise
 - Turbidity
 - Migration Barriers
 - Behavior Modifications



...From Construction Activities

- Cofferdams
- Detour bridge
- Work trestle
- Bridge Demolition
- Pile driving
- Placing fill or riprap



Avoid, Minimize, Mitigate

- Footprint of permanent features
- Timing of tree removal and in-water construction activities
- Isolate the work area
- Duration
- Footprint of in-water temporary access and detours
- Limit soil disturbance, tree clearing and use BMPs
- Noise Attenuation & Monitoring

Regulatory Context

Applicable Law	Agency that Administers the Law
Endangered Species Act Fish and Wildlife Conservation Act	National Marine Fisheries Service U.S. Fish and Wildlife Service
Magnuson Stevens Act (Essential Fish Habitat)	National Marine Fisheries Service
Maine Natural Resources Protection Act	Maine Department of Environmental Protection
Section 404 of the Clean Water Act Section 10 of the Rivers and Harbors Act	U.S. Army Corps of Engineers
Marine Mammal Protection Act	National Marine Fisheries Service

MaineDOT Environmental Office Contact

- Kristen Chamberlain
- (207) 557-5089
- Kristen.chamberlain@maine.gov



Questions?